

Shear Beam

Type Series FSB33



Features:

- Measuring range from 227 kg to 4536 kg
- Stainless steel construction
- Unique blind loading hole
- Inexpensive price
- Simple installation
- High input resistance
- Protection class IP68

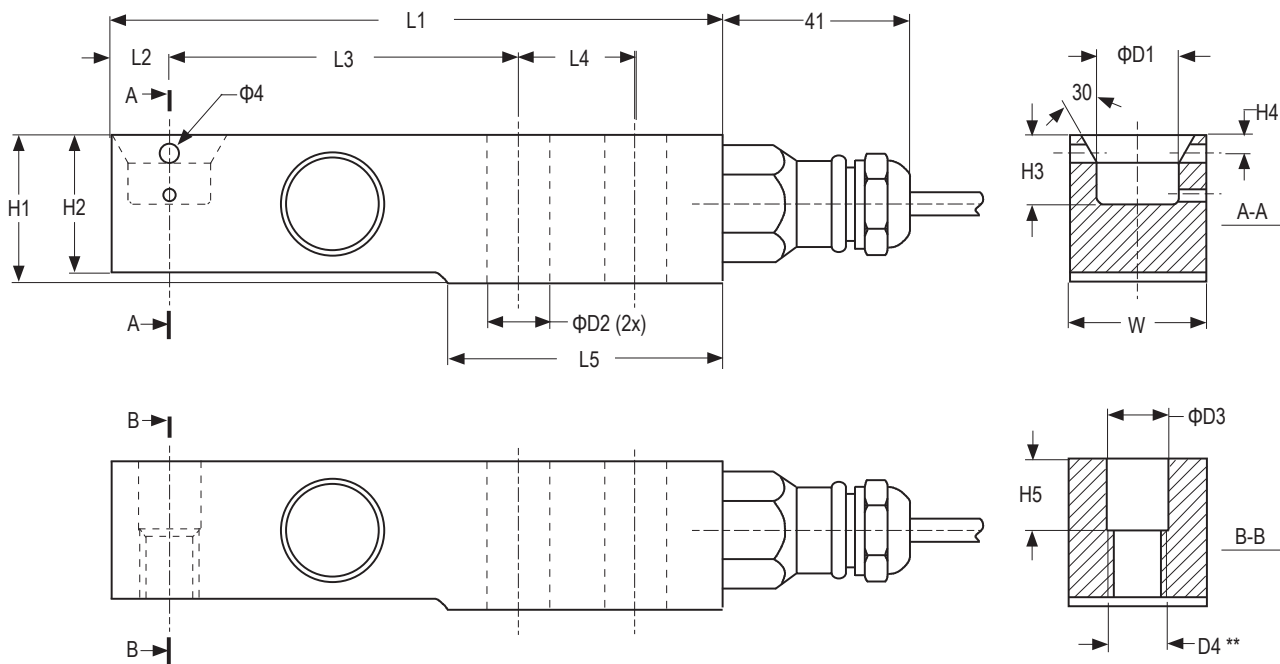
Applications:

- Weight & dosing applications
- Force measurement
- Platform scales
- Production lines
- Measurement and inspection equipment
- Testing and manufacturing plants

Technical data:

Maximum capacity	lb	500 / 1000 / 2500 / 5000 / 10000
	kg	227 / 454 / 1134 / 2268 / 4536
	<i>1 lb = 0.45359 kg</i>	
Temperature effect on minimum dead load output	% FS /10°C	≤ ± 0.0400 ≤ ± 0.0122
Temperature effect on sensitivity	% FS /10°C	≤ ± 0.0200 ≤ ± 0.0100
Combined error	% FS	≤ ± 0.0500 ≤ ± 0.0200
Non-linearity	% FS	≤ ± 0.0400 ≤ ± 0.0166
Hysteresis	% FS	≤ ± 0.0400 ≤ ± 0.0166
Creep error (30 minutes)	% FS	≤ ± 0.0600 ≤ ± 0.0166
Rated output	mV/V	2 ± 0.1%
Zero balance	%	≤ ± 5
Excitation voltage	% FS	5 ... 15
Input resistance	Ω	1100 ± 50
Output resistance	Ω	1000 ± 2
Insulation resistance (100 V DC)	MΩ	≥ 5000
Safe load limit	% FS	200
Ultimate load	% FS	300
Safe side load	% FS	100
Compensated temperature range	°C	-10 ... +40
Operating temperature range	°C	-40 ... +80
Load cell material		stainless steel 17-4 PH
Sealing		complete hermetic sealing
Protection according EN 60 529		IP68 (up to 2 m water depth)

Dimensions:



Range	L1	L2	L3	L4	L5	H1	H2	H3	H4	H5	W	D1	D2	D3	D4	Mounting bolts	Torque *
500 lb / 1000 lb	133.4	12.7	76.2	25.4	59.9	31	28.8	15	4	15	30	18	13	13.5	M12	M12 8.8	90 Nm
2500 lb	133.4	12.7	76.2	25.4	59.9	31	30.5	15	4	15	30	18	13	13.5	M12	M12 8.8	90 Nm
5000 lb	133.4	12.7	76.2	25.4	59.9	31	30.5	15	4	15	30	18	13	13.5	M12	M12 10.9	120 Nm
10000 lb	177.8	19.1	95.3	38.1	92.7	43.6	38.1	20.5	8	20.1	43	25	21	21.5	M20	M20 8.8	400 Nm

* Torque values assume oiled threads.

** Unified thread 1/2-20 UNF (for 500...5000 lb) and 3/4-16 UNF (for 10000 lb) is available

Electrical connections:

